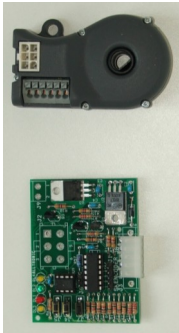
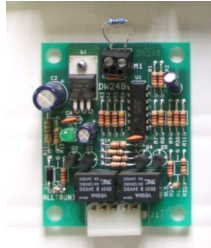


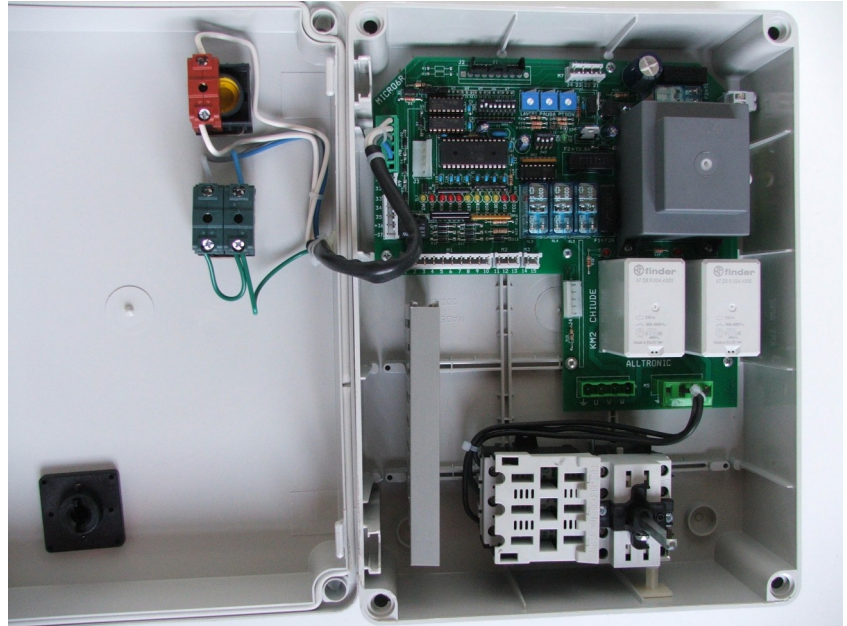
# Control type mod. Micro 6R

for fast doors, sliding doors and rolling shutters

Plug-in card  
**DW24B** for  
electrical safety profile  
(on request)



**SkEncoder**  
Plug-in card  
for absolute encoder  
(on request)



## Functions :

### Inputs control for :

- 01) Button to open N.O.
- 02) Button to close N.O.
- 03) Button to open-close dynamic N.O.
- 04) Button Pedestrian N.O.
- 05) Low Photocell N.C. **with Auto-test**
- 06) High Photocell N.C. **with Auto-test**
- 07) Electronic Block Button N.C.
- 08) Electromechanical Block Button N.C. (mushroom)
- 09) End-run open N.C. (block the movement )
- 10) End-run close N.C. (block the movement )
- 11) End-run N.O. – disable the photocell in the last centimetres (sk luc)
- 12) DW24VA = control for electrical safety profile with Auto-test ( Approved in according EN12978 category 3)

### Programming Inputs:

- Dip 1 = P.L. (Leaf Door function = photocell stop in open and close 1 sec.)  
 Dip 2 = Function Anti-dragging  
 Dip 3 = PRESSED BUTTON in Open and Close  
 Dip 4 = Function of Dynamic button Open, Block, Close, Open etc...  
 Dip 5 = Function Blinker Times  
 Dip 6 = Auto-test DW 24  
 Dip 7 = Auto-test low photocell  
 Dip 8 = Auto-test high photocell
- Trimmer Working Time  
 Trimmer Pause Time  
 Trimmer Pedestrian Time  
 Dip 09-10 = Reversal Time (from 0,5 to 4 sec.)  
 Dip 11-12 = "Range" Working Time (from 30 to 150 sec.)

Automatic – Semi-automatic selection

Connection for Radio Receiver of several type Mono or Bi-channels

**Supply 400V or 230V (by shunt) Threephase or Monophase**

**Max. motor capacity : 4,0 kW at 400V**

### Outputs:

- 01) Power Relay Open
- 02) Power Relay Close
- 03) Blinker Relay 230Vac
- 04) Blinker Relay 24Vac
- 05) Light of courtesy Relay 24Vdc -3W (open, pause, close)
- 06) Relay Motor Brake 24Vac. (for open counterpoised door without main-tension) - on request
- 07) Photocell supply for Auto-test

- Function sk luc enclosed (disable the low photocell and/or the DW24B in the last centimetres).

- Lateral Terminal Block for buttons on the covering

- Isolating switch with fuses on Din Bar

The control is in conformity with the follows Directives:

Electromagnetic Compatibility - Low Tension - Machines - EN12453

The Alltronic S.n.c. reserves the right to change materials and / or technical details without notice.

**ALLTRONIC S.n.c. - Via Torino, 84 – 12041 Bene Vagienna (Cn) Italy – Tel. 0039 172 654445 – Fax 0039 172 654105.**

**[WWW.alltronic.it](http://WWW.alltronic.it) - E-mail: [alltronic@alltronic.it](mailto:alltronic@alltronic.it)**