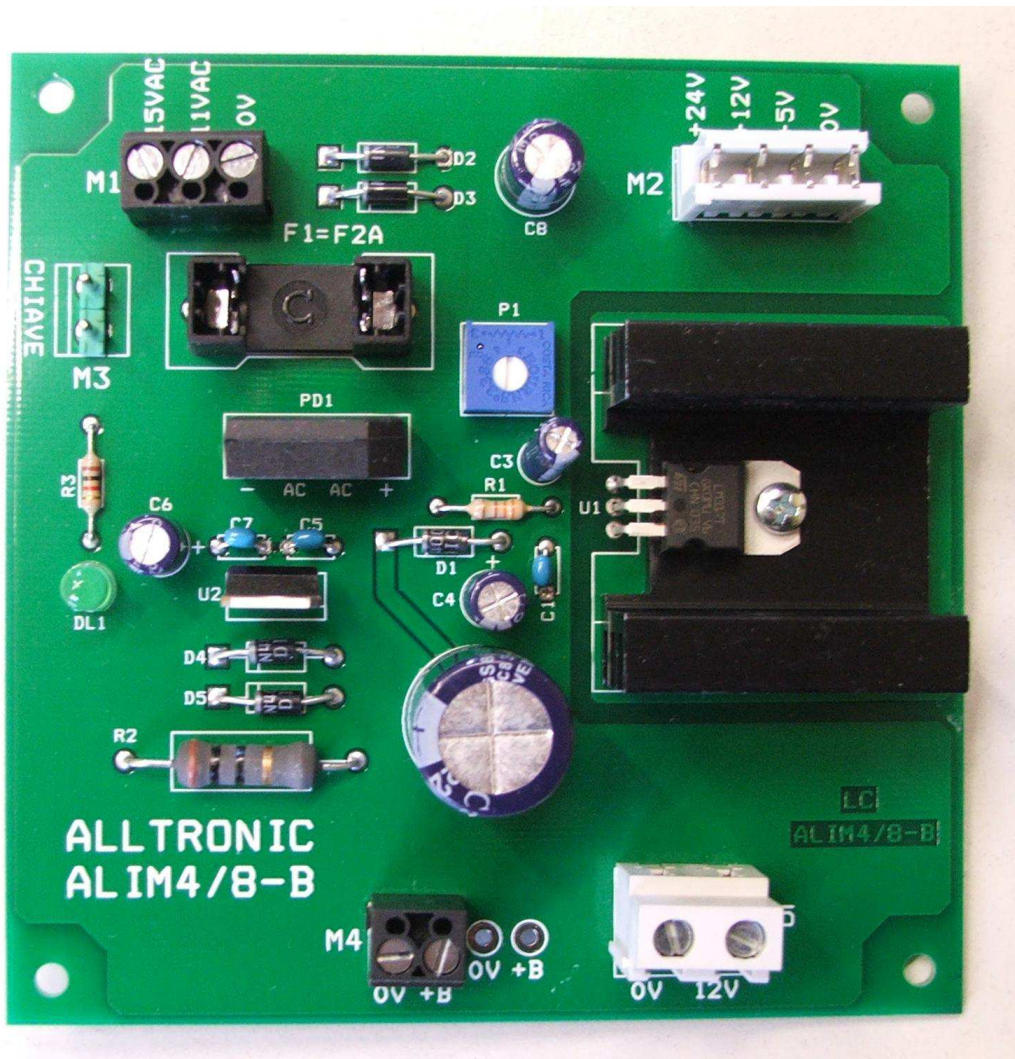


Adjusting Power Supply mod. ALIM4/8-B

After connecting all the sensors to be powered to input terminal M5 (0V and 12V) and the control panel connected to ON, adjust the trimmer P1 to the output voltage to **13.2 Volts**.



CAUTION: Before connecting the 230V check the correct connection of the wires 0V and +12 V (sensors) because, if reversed, causing the burning of all the ICs of the control.

ALLTRONIC S.n.c. Via Torino 84 - 12041 Bene Vagienna (cuneo) - Italy
Tel. +39 0172 654445 - Fax +39 0172 654105 - mail : alltronic@alltronic.it